



Using A Marine Natural Capital Approach for saltmarsh restoration

REACH Conference 16th July 2019

Dr Aisling Lannin on behalf of the Marine Pioneer
Partnerships

The Marine Pioneer

- Testing the delivery of the 25YEP for Defra
- Applying a natural capital approach in practice, integrating planning and delivery, sustainable funding, share lessons
- Partnership delivery, steering and stakeholder groups, project managers
- March '17 – March '19



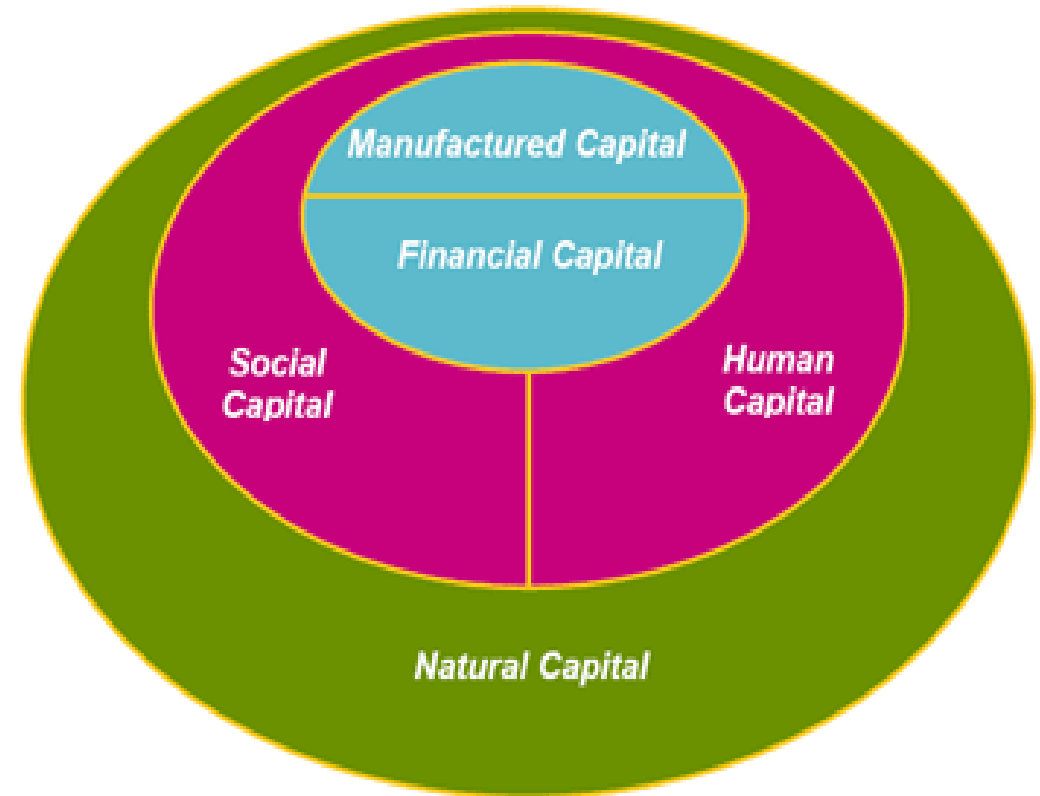
Natural Capital Approach – Opportunities/Risks

Opportunities

- Place based vision, partnership delivery, blended finance
- System approach - scale
- Flow of benefits/ES based
- Area integrated planning – natural capital plans

Risks

- Not the whole answer, requires culture change, need to embrace complexity, accounting alone won't work

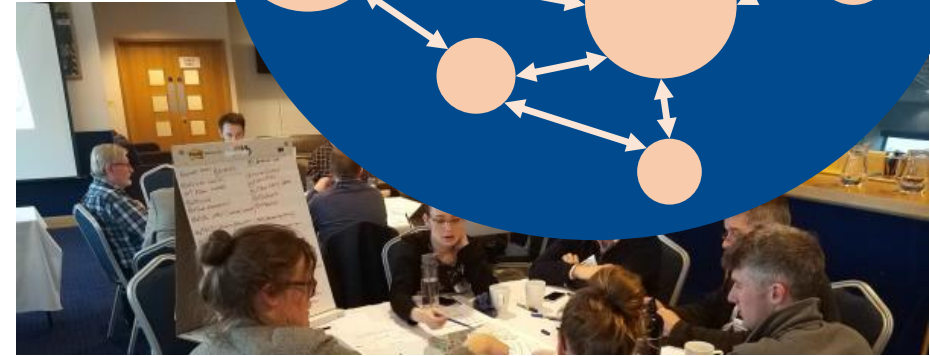
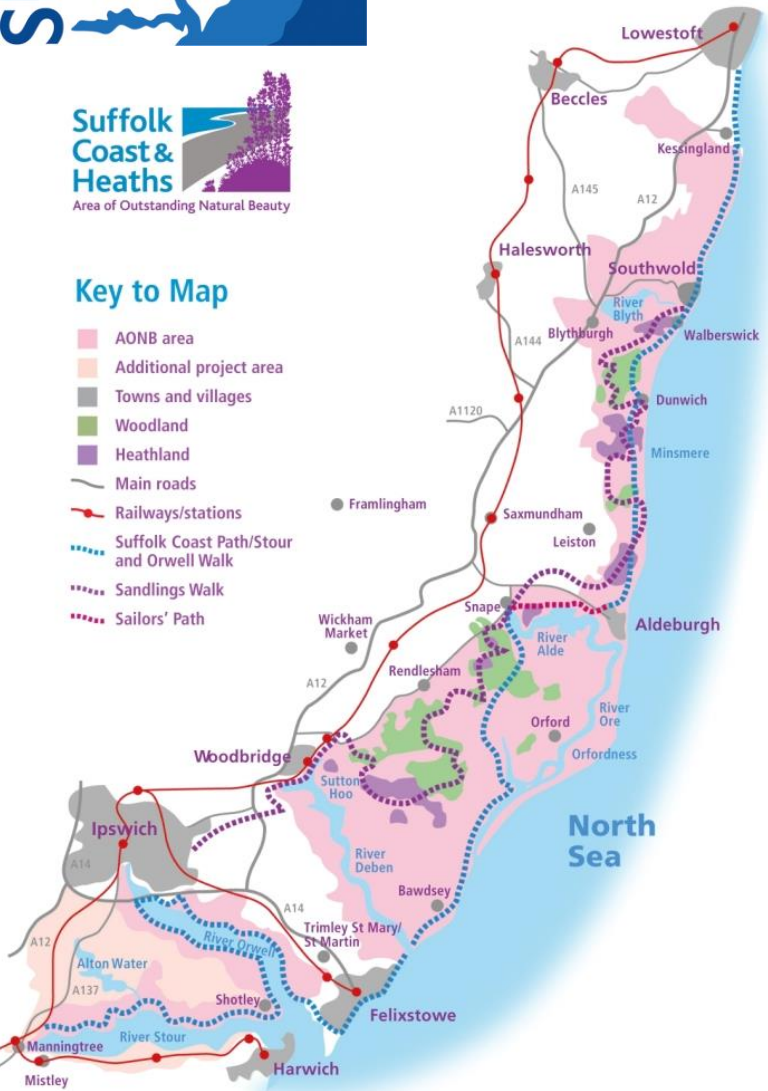


Suffolk Marine Pioneer



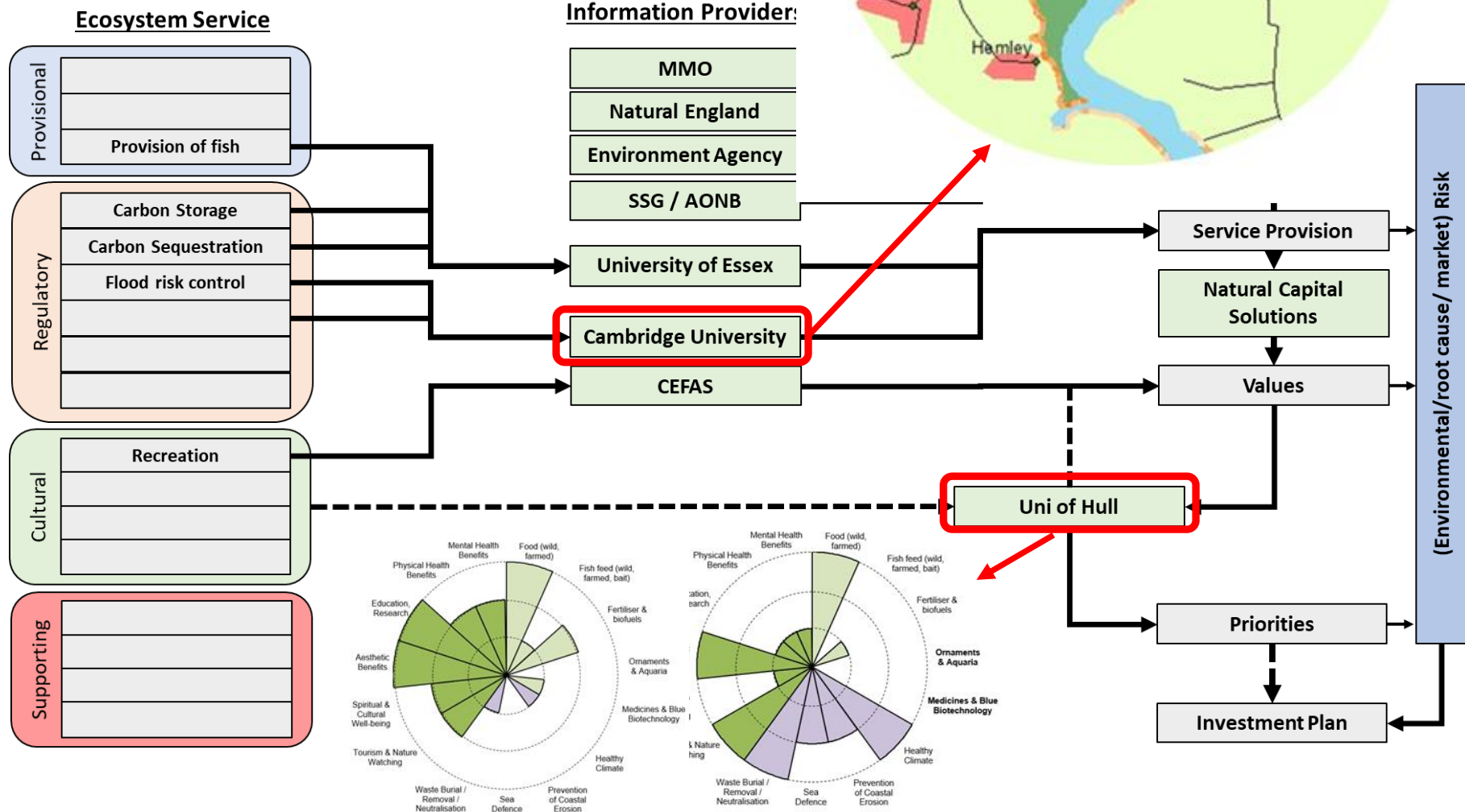
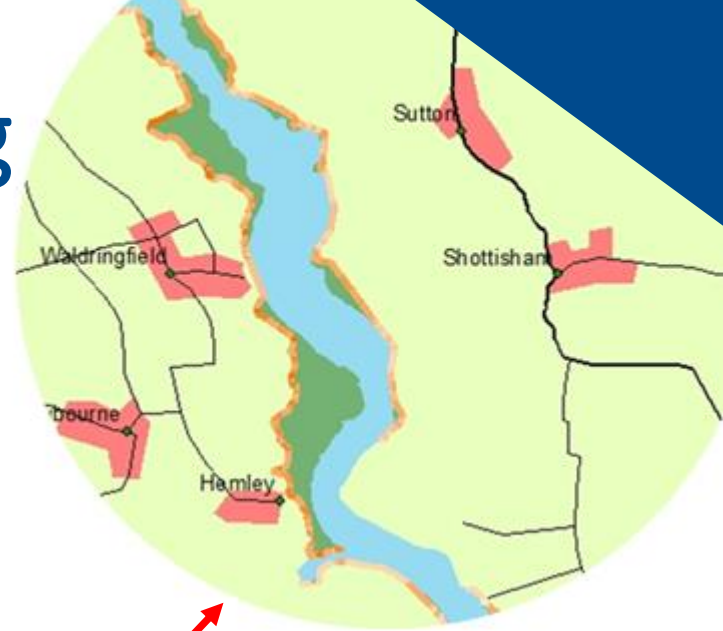
Key to Map

- AONB area
- Additional project area
- Towns and villages
- Woodland
- Heathland
- Main roads
- Railways/stations
- Suffolk Coast Path/Stour and Orwell Walk
- Sandlings Walk
- Sailors' Path

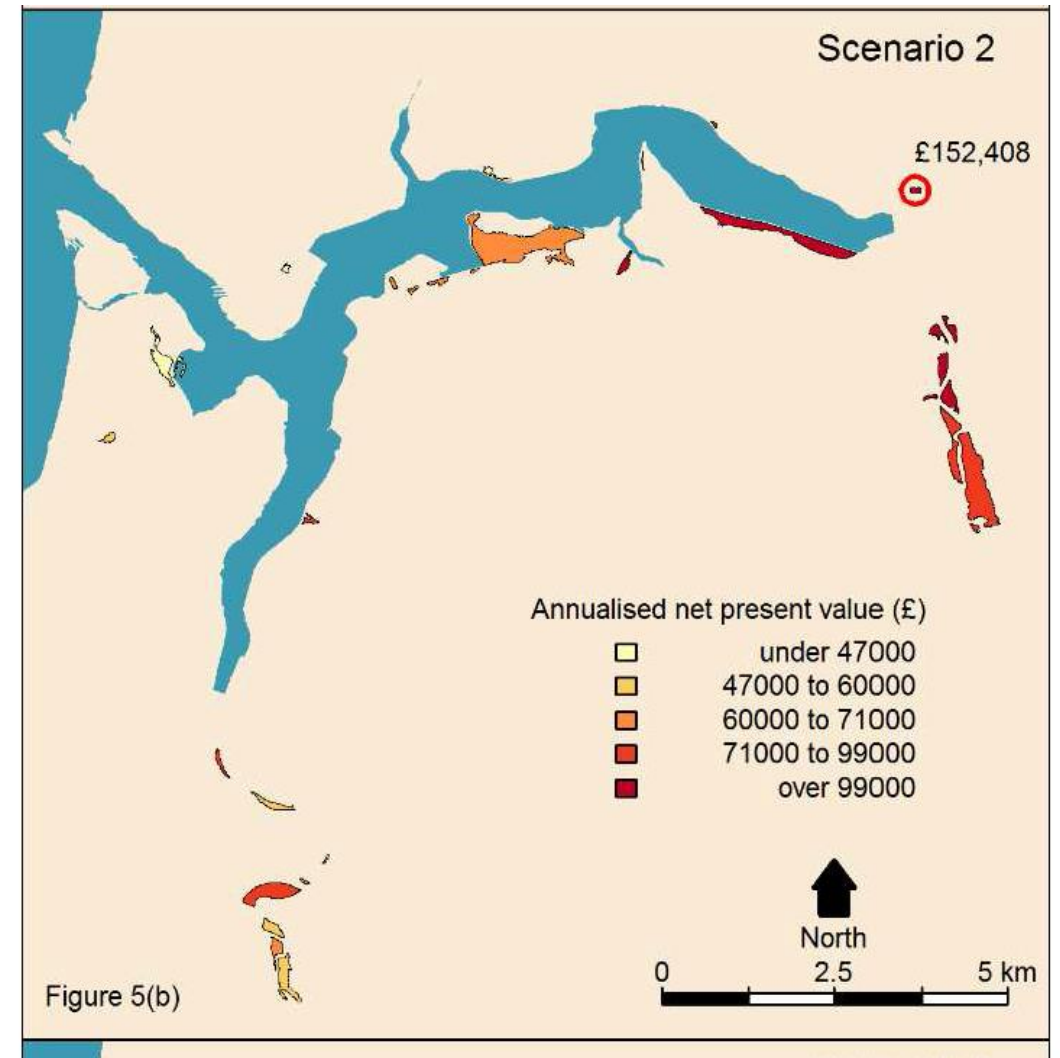
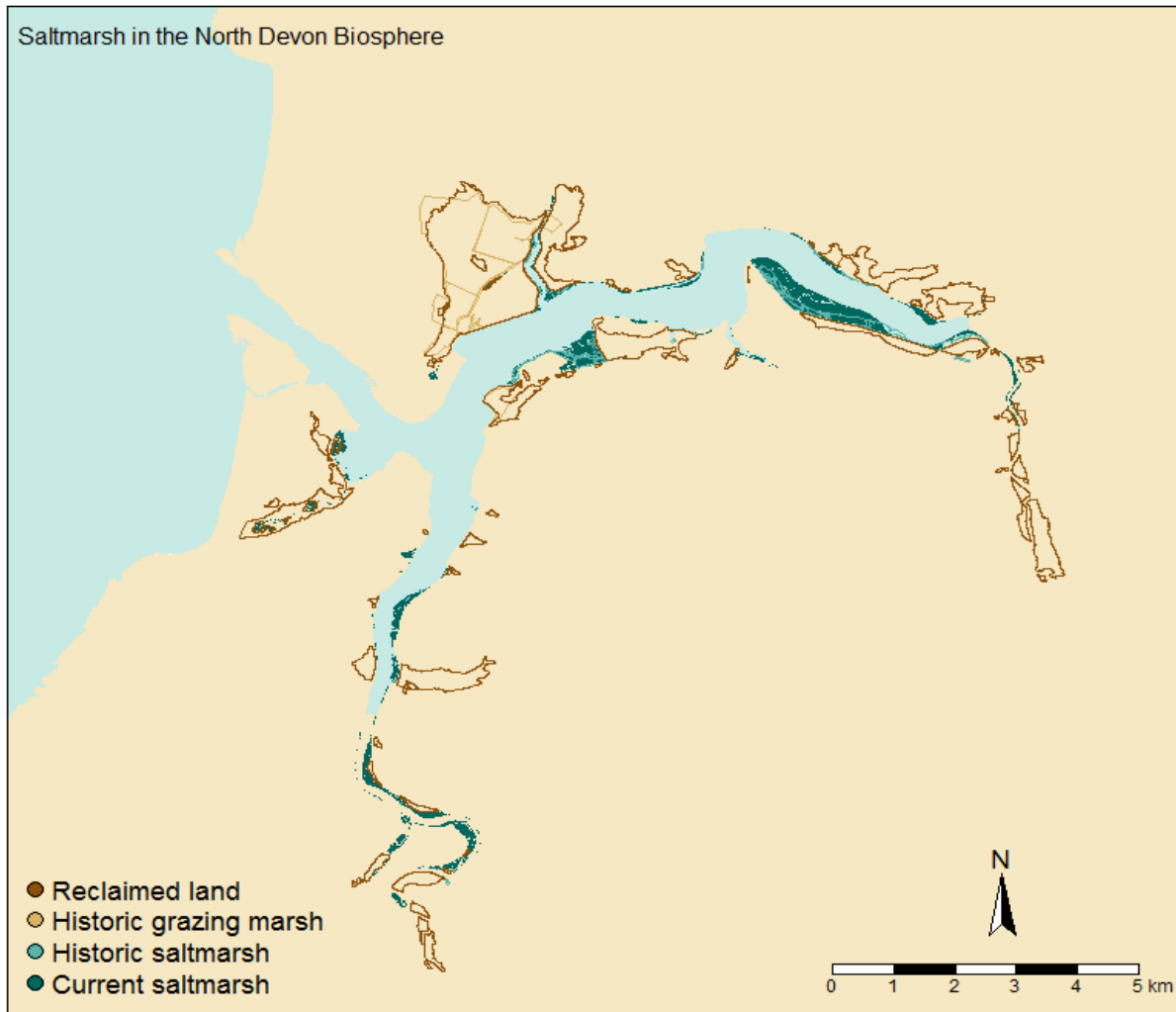


- Suffolk coast has a great history of Partnership working
- Coastal Defence, Innovation, Estuary Mgmt, Diversity Define SCH
- SCH AONB Host SMP
- Engaged Communities – can we deliver for them?
- Used to working in novel ways
- **Focus is on effective local delivery**

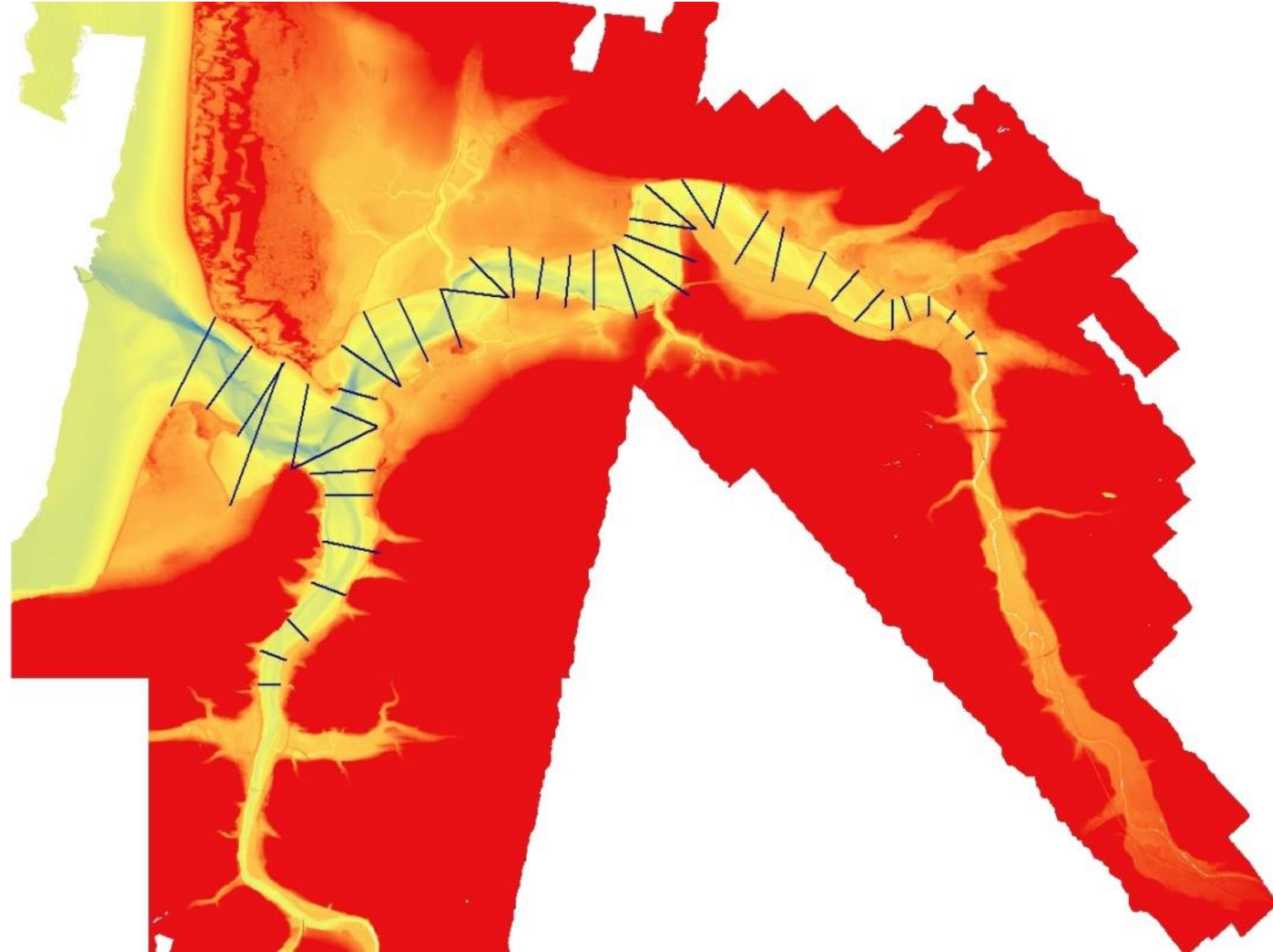
Building an understanding



Saltmarsh North Devon UNESCO Biosphere



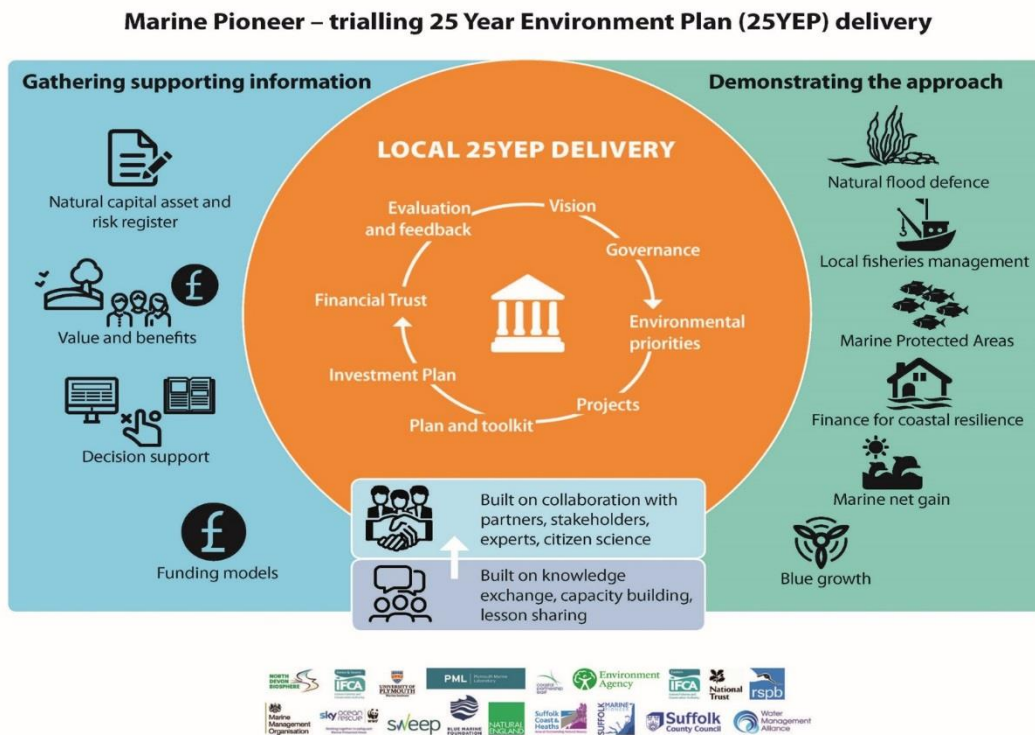
Healthy Estuary – integrated approach



Using previous experience



Delivery framework and sustainable finance



- Place based natural capital plans
- Transparent and shared system to identify priorities and investable projects
- Blended delivery across partners
- Blended finance across partners
- Foundation/Trust
- Evaluation and feedback
- Public funds – impact funds
- Green Finance Strategy

Conclusions

- Challenges
 - Meeting the 25YEP vision
 - cost of consents
- Successes
 - Illustrating added value
 - Linking to new funding
- Best practice
 - Integrated delivery framework



Contributors and weblinks



<https://www.northdevonbiosphere.org.uk/marinepioneer.html>



https://www.researchgate.net/publication/332225506_North_Devon_Marine_Pioneer_2_A_Natural_Capital_Asset_and_Risk_Register



<http://www.suffolkcoastandheaths.org/marine-pioneer/faqs/>