



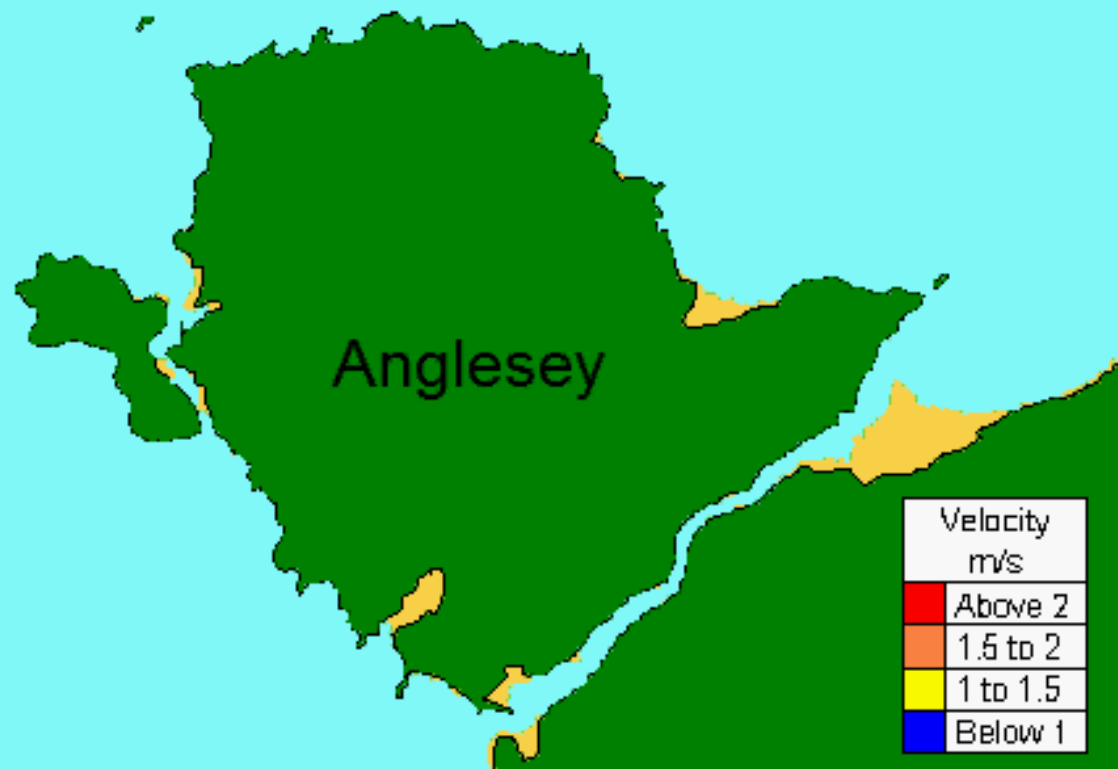
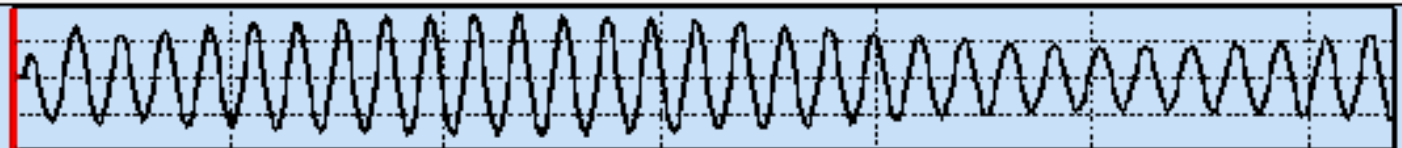
COASTS AND ESTUARIES OF NORTH AND MID WALES

INTRODUCTION AND WELCOME
ONGOING DEVELOPMENTS IN NORTH WALES

COLIN JAGO
SCHOOL OF OCEAN SCIENCES
BANGOR UNIVERSITY



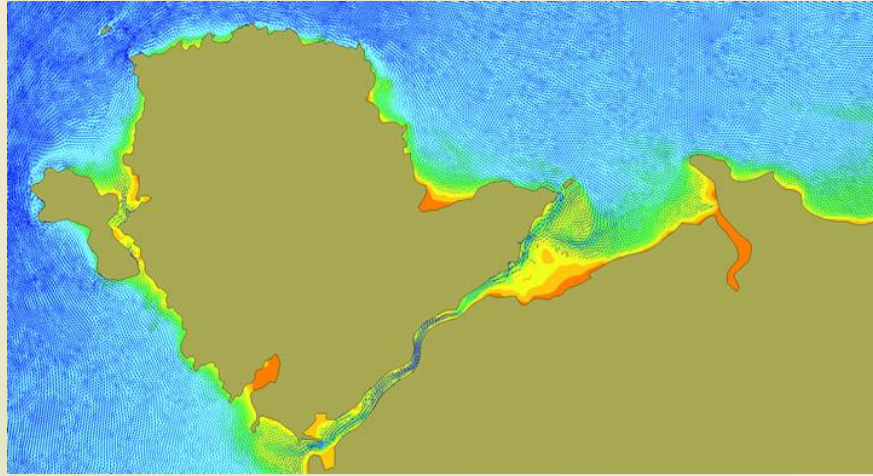
1.250
0.000
-1.250





Estuaries characterised by

- high tidal range (so extensive intertidal flats)
- low wave activity (bar built lower estuaries)
- late stage of sediment infilling (so shallow water)
- high proportion of sand (of marine origin)



The Menai Strait: a narrow waterway with very fast currents, extensive sandy tidal deltas at both ends



SEACAMS

Project Director:
Project Co-ordinator:
R&D Manager:

Professor Colin Jago
Dr Gay Mitchelson-Jacob
Dr Michael Roberts





Marine Centre Wales

State of the art building providing new laboratories, exhibition and conference facilities, and hot desking for businesses to work in collaboration on R & D projects



Provides access for businesses to labs, ships and facilities, academic expertise

SEACAMS provides collaborative research for marine, coastal, estuarine and catchment businesses

Laboratory facilities & equipment

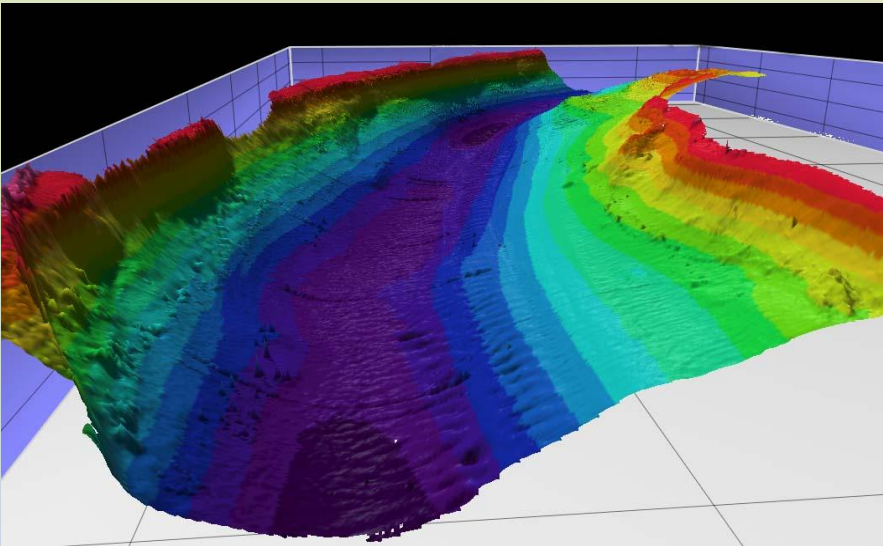


offshore facilities & equipment

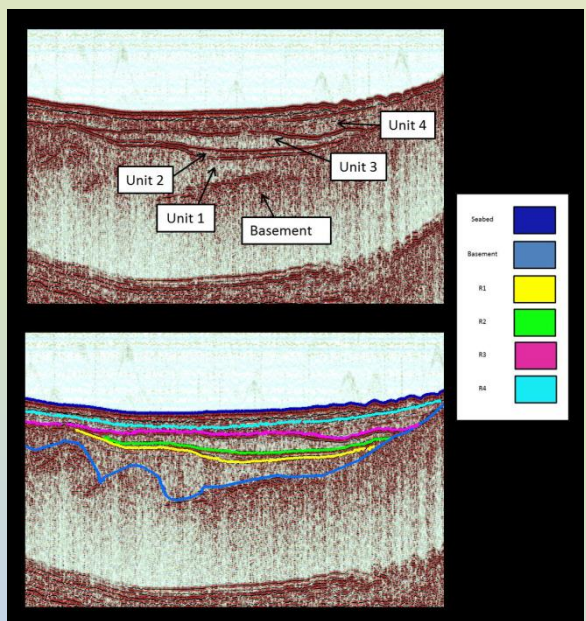
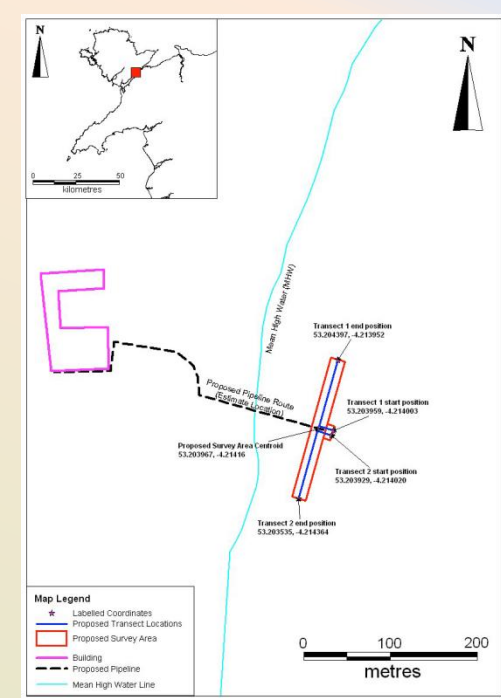
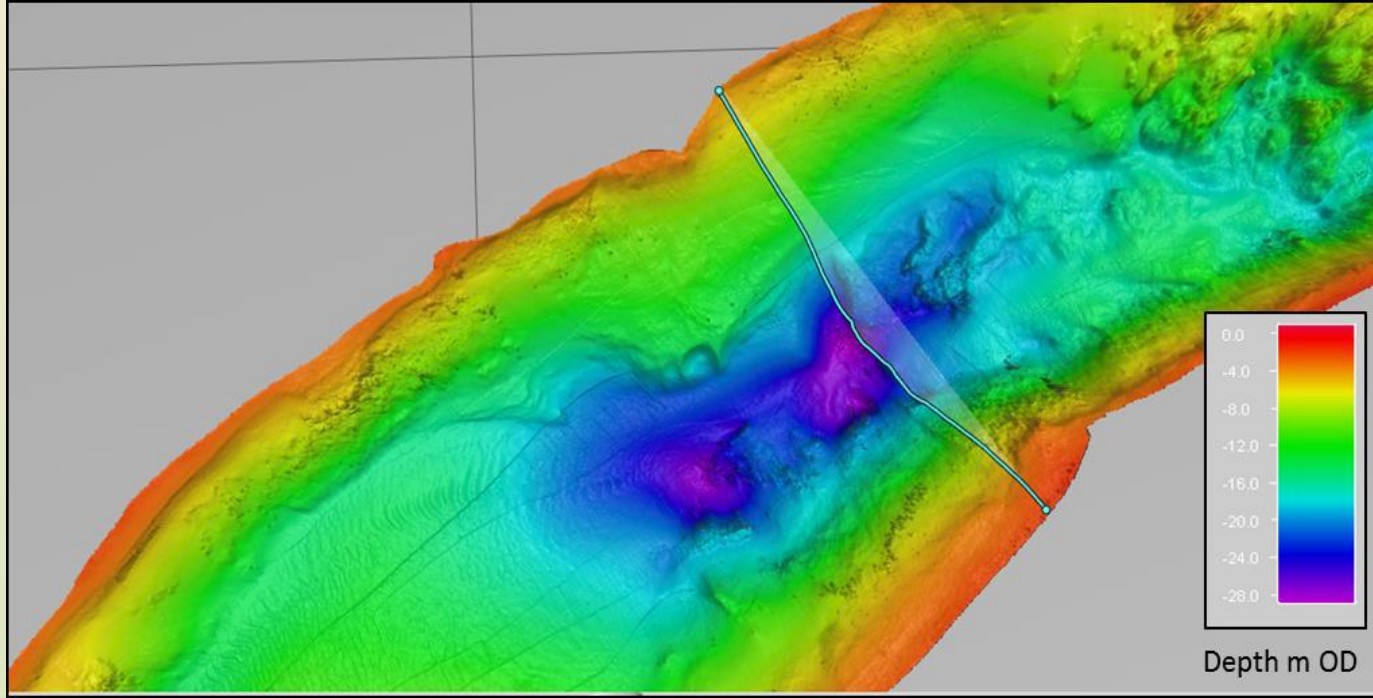




SEACAMS PROJECT TO TAKE HEAT FROM THE MENAI STRAIT FOR THE NATIONAL TRUST'S PLAS NEWYDD



MULTIBEAM SURVEY OF MENAI STRAIT



REVIEW
IMPACTS ON
BENTHOS

SUB-BOTTOM PROFILE OF MENAI STRAIT

C.3. Wales

The two zones off Wales are South Pembrokeshire and West Anglesey, as shown in Figure 4. Tables 6 and 7 give details.

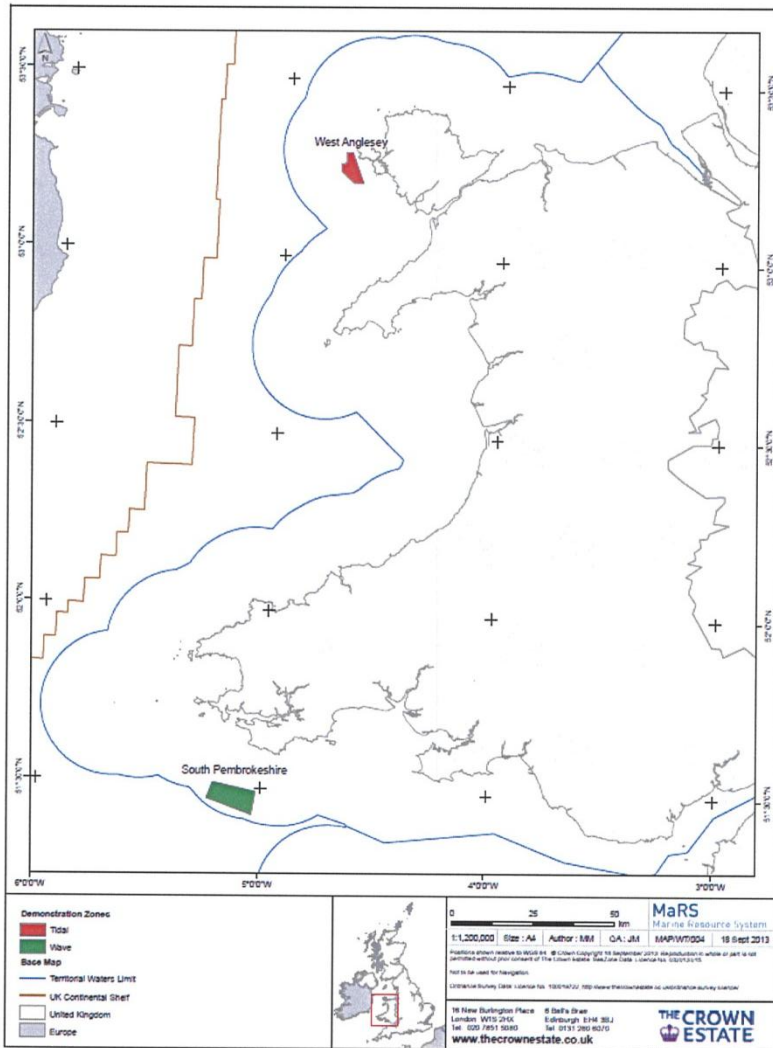
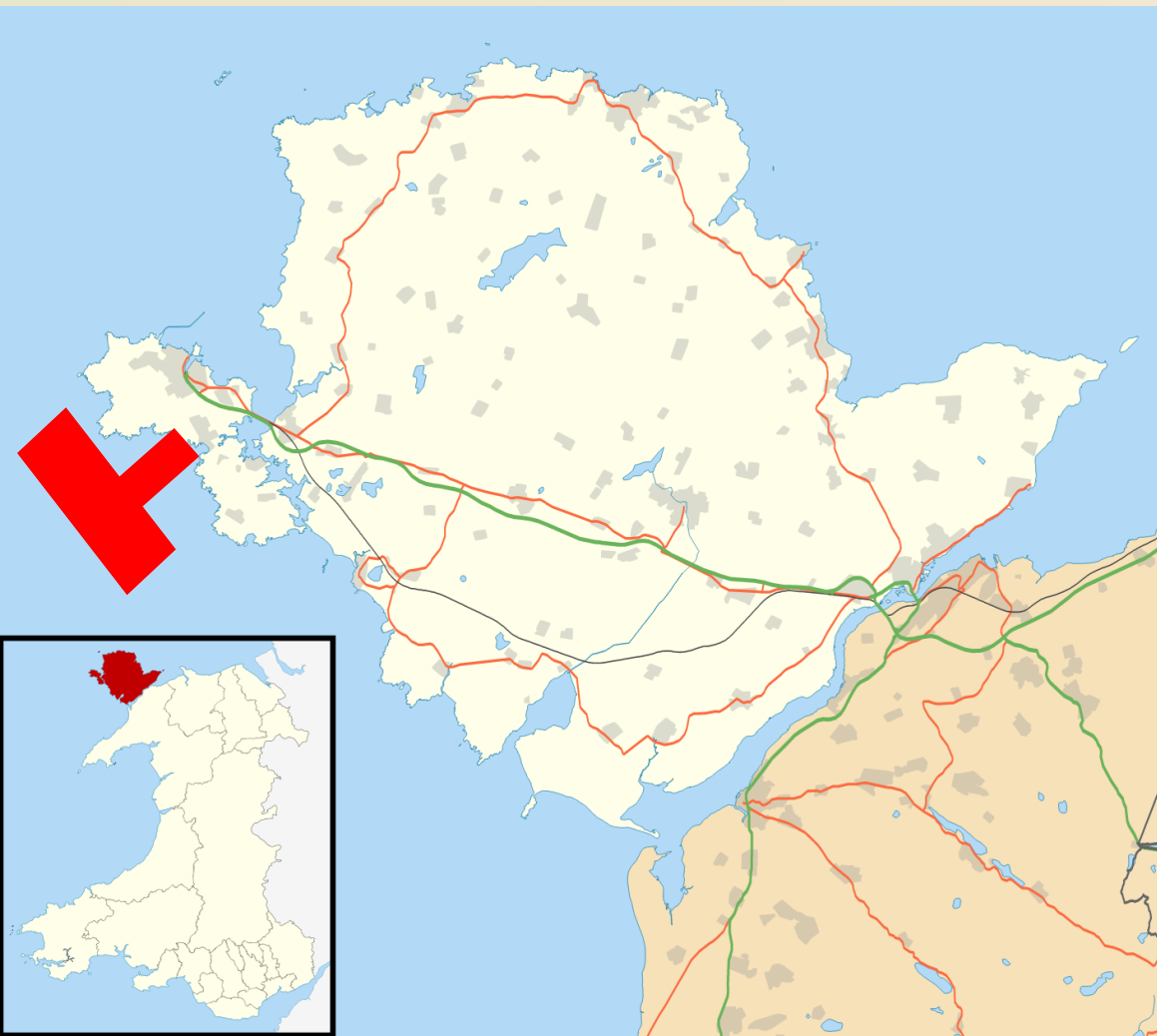


Figure 4: Wave and tidal current demonstration zones off Wales

DEMONSTRATION ZONES set up by The Crown Estate as designated areas for commercial operators in offshore renewable energy.

2 demonstration zones in Wales: off Pembrokeshire (for wave energy) and off Anglesey (for tidal energy).

£1M funding from WEFO to SEACAMS to establish a research database for the Anglesey demonstration zone that will assist prospective commercial operators.



SEACAMS will:

- Survey seabed morphology (multibeam) and benthic habitats (video).
- Instrument area with ADCPs, wave buoy and LISST to measure wave/current regime, turbulence, suspended matter.
- Generate hydrodynamic models for the region.
- Establish coastal observatory on the shoreface.
- Initiate study of impact of structures on benthic biota.
- Investigate methodology for assessing cetacean activity.